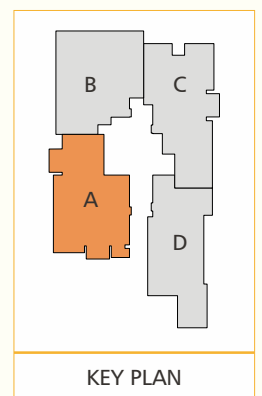
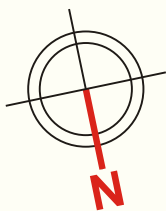
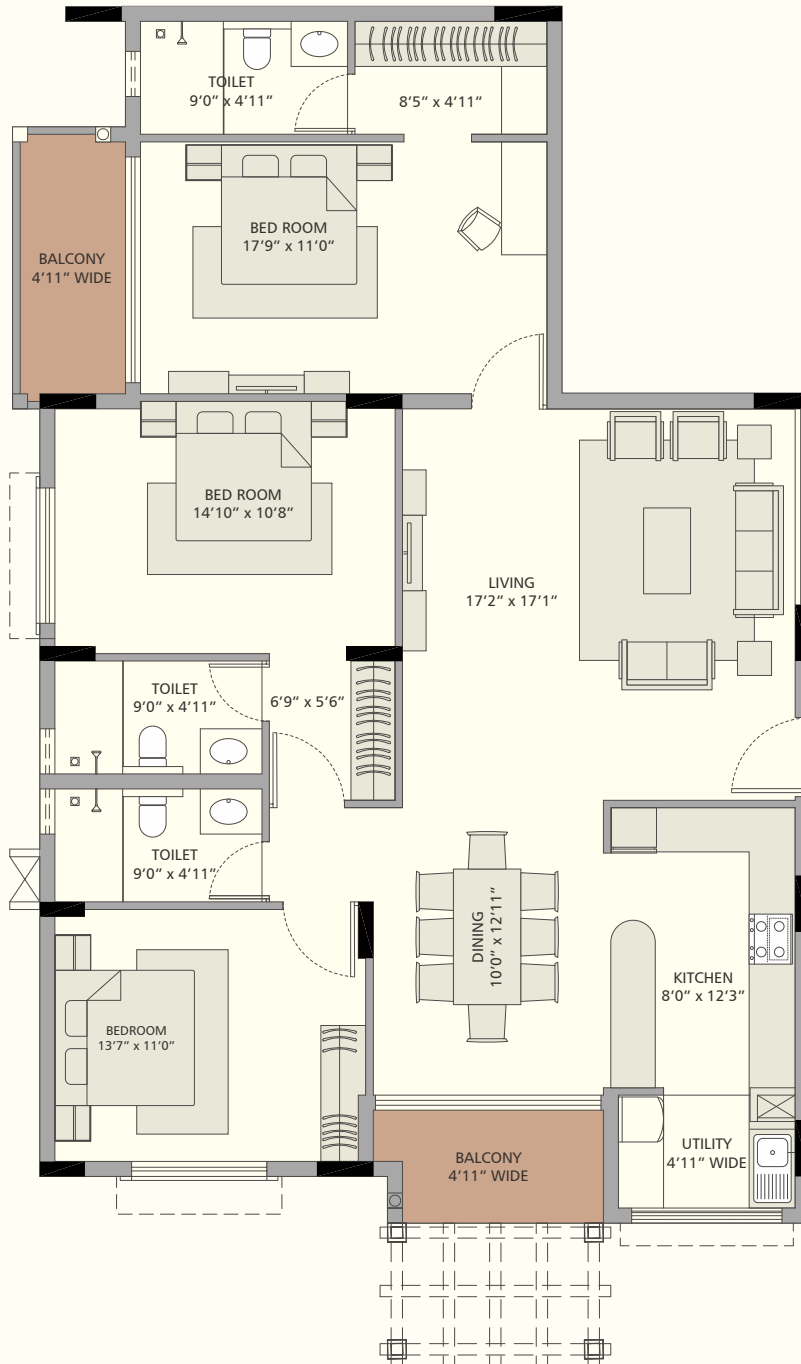


FLOOR PLAN

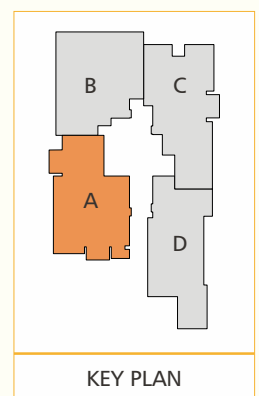
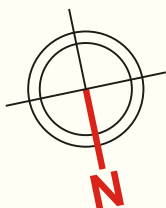
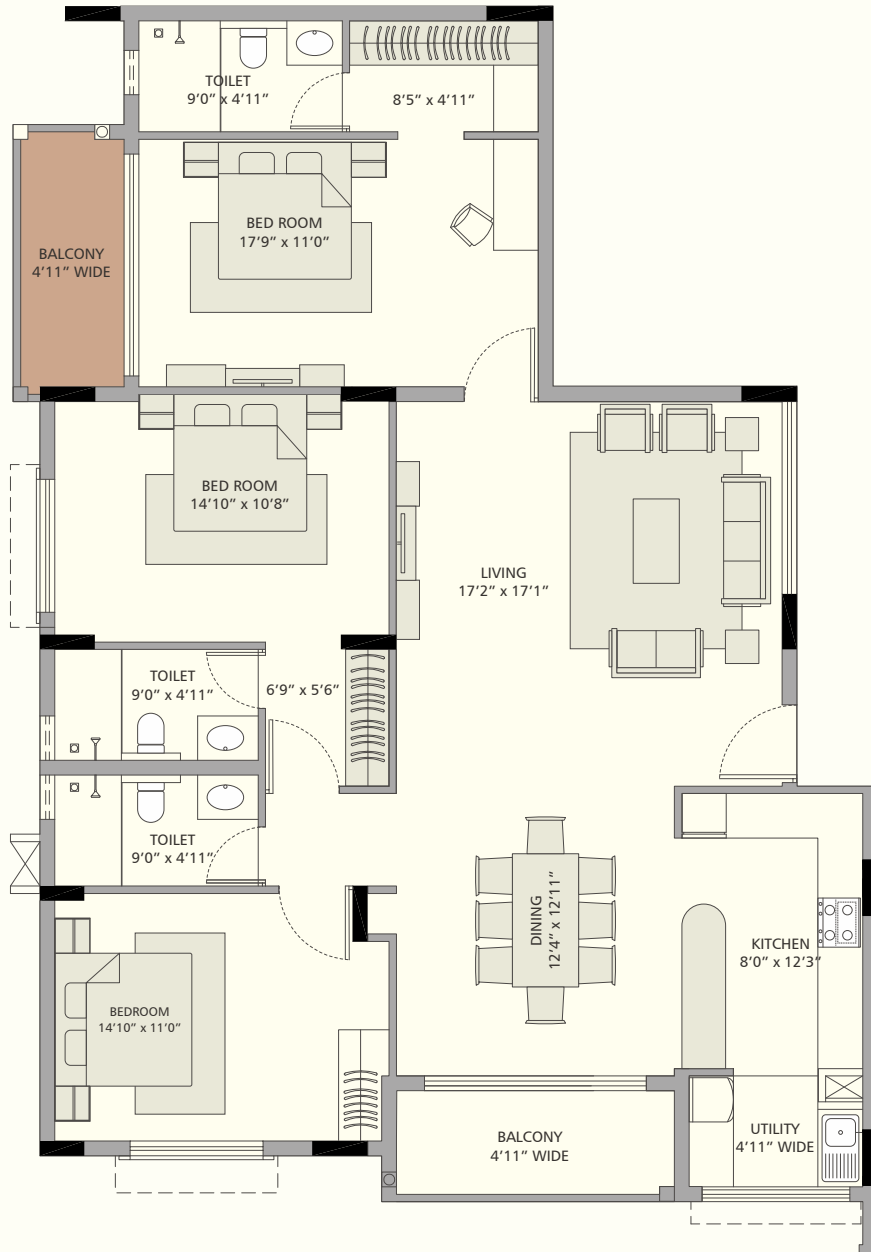
BLOCK A : 001 Ground Floor
 3 BHK + 3 T
 Carpet Area : 1430.86 Sq. ft
 Balcony Area : 106.24 Sq. ft
 Garden Area : 221.38 Sq. ft
 Common Area : 329.10 Sq. ft



The information depicted herein viz., master plans, floor plans, furniture layout, fittings, illustrations, specifications, designs, dimensions, rendered views, colours, amenities and facilities etc., are subject to change without notifications as may be required by the relevant authorities or the developer's architect, and cannot form part of an offer or contract. Whilst every care is taken in providing this information, the Developer cannot be held liable for variations. All illustrations and pictures are artist's impression only. The information are subject to variations, additions, deletions, substitutions and modifications as may be recommended by the company's architect and/or the relevant approving authorities. The Developer is wholly exempt from any liability on account of any claim in this regard. (1 square metre = 10.764 square feet). E & OE

FLOOR PLAN

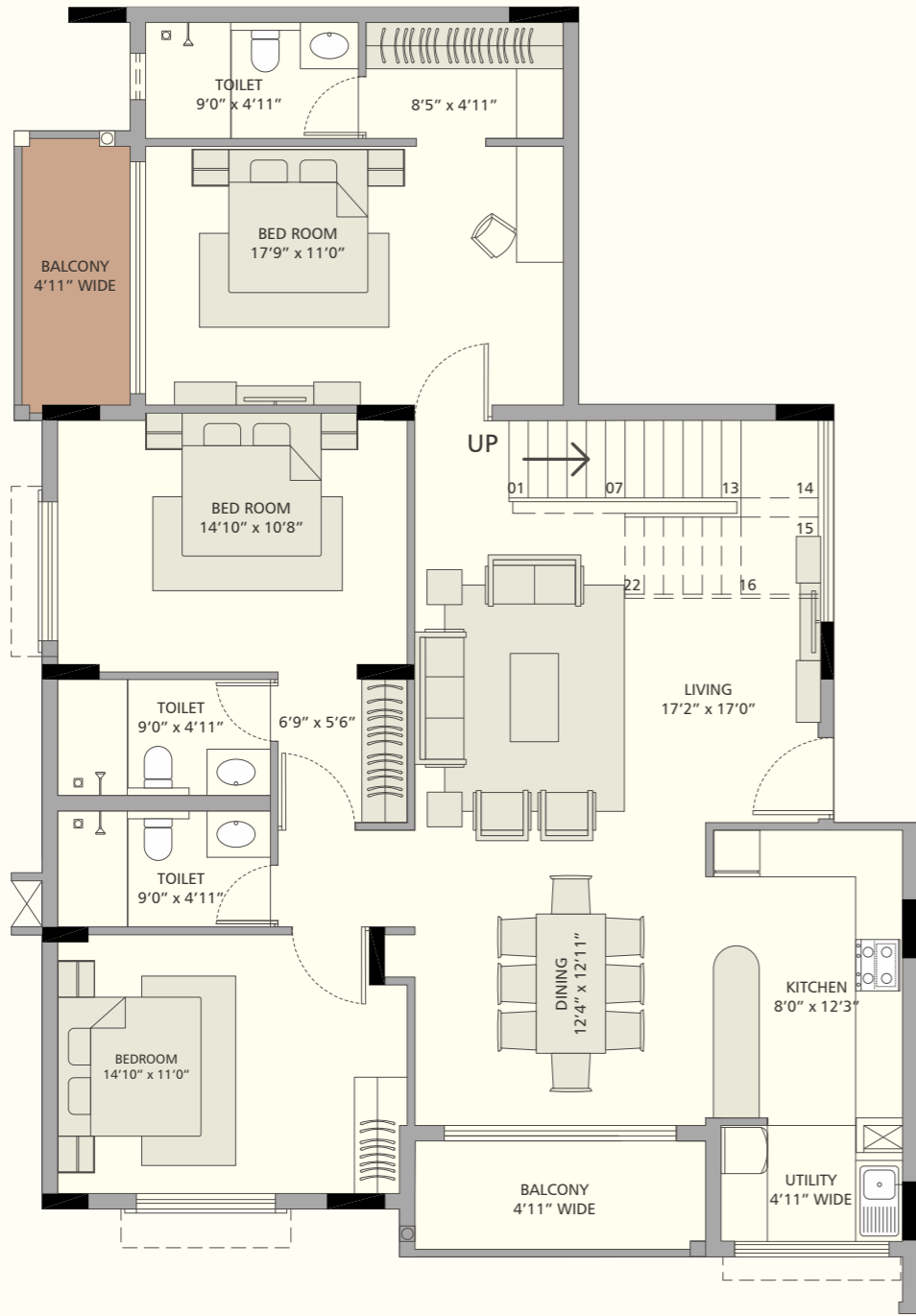
BLOCK A : 101 First Floor
 3 BHK + 3 T
 Carpet Area : 1487.69 Sq. ft
 Balcony Area : 120.13 Sq. ft
 Garden Area : -
 Common Area : 342.17 Sq. ft



The information depicted herein viz., master plans, floor plans, furniture layout, fittings, illustrations, specifications, designs, dimensions, rendered views, colours, amenities and facilities etc., are subject to change without notifications as may be required by the relevant authorities or the developer's architect, and cannot form part of an offer or contract. Whilst every care is taken in providing this information, the Developer cannot be held liable for variations. All illustrations and pictures are artist's impression only. The information are subject to variations, additions, deletions, substitutions and modifications as may be recommended by the company's architect and/or the relevant approving authorities. The Developer is wholly exempt from any liability on account of any claim in this regard. (1 square metre = 10.764 square feet). E & OE

FLOOR PLAN

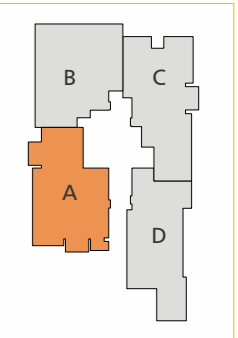
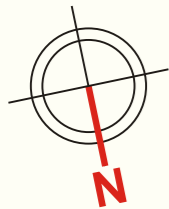
BLOCK A : 201 Second Floor (LL) & Third Floor (UL)
 4 BHK + 4 T
 Carpet Area : 2015.02 Sq. ft
 Balcony Area : 180.73 Sq. ft
 Garden Area : 316.96 Sq. ft
 Common Area : 463.45 Sq. ft



LOWER LEVEL



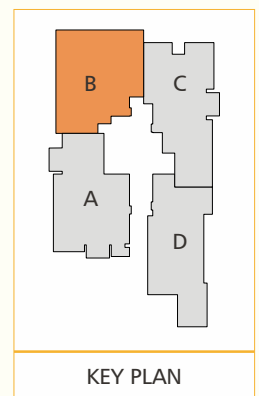
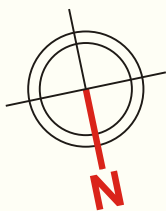
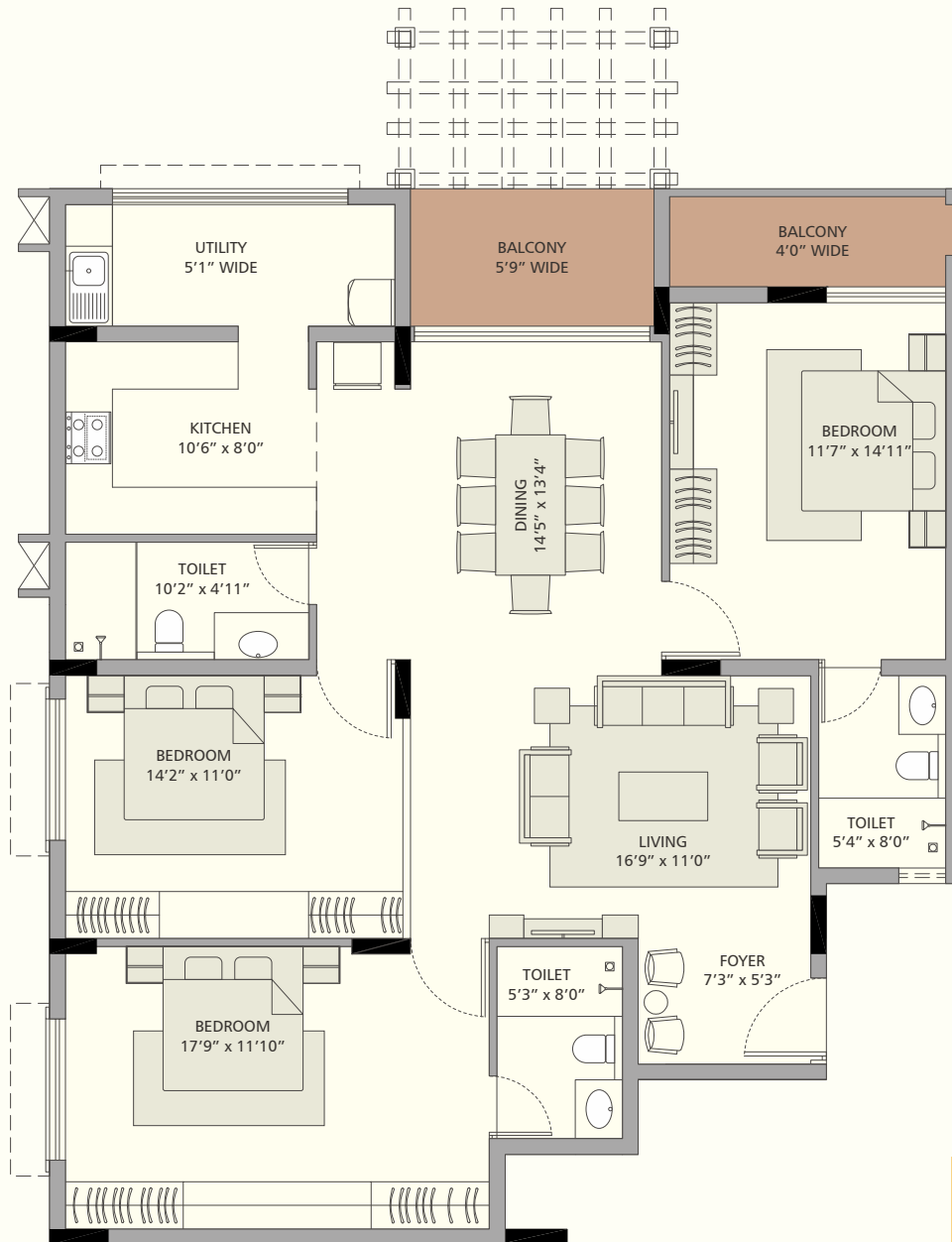
UPPER LEVEL



KEY PLAN

FLOOR PLAN

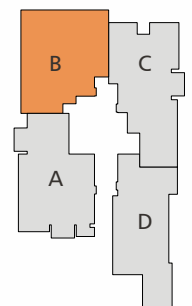
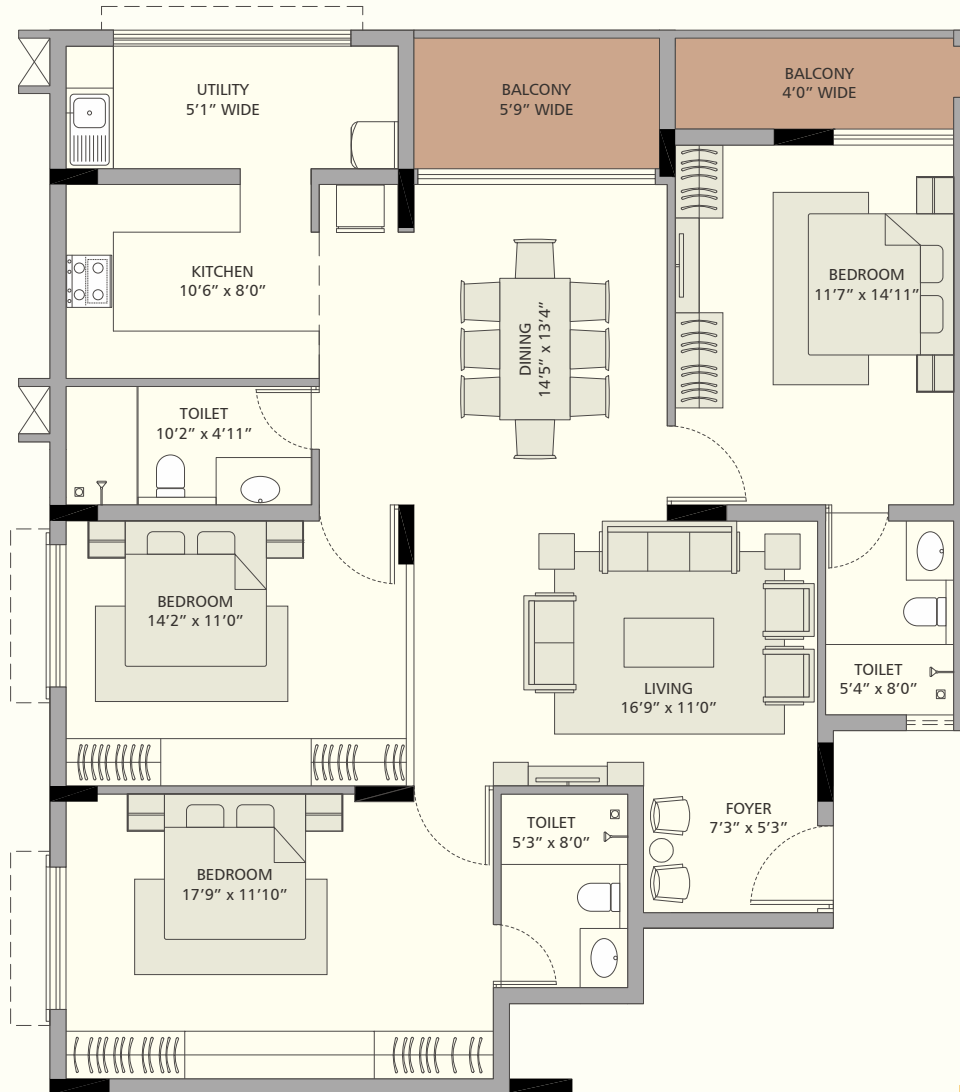
BLOCK B : 002 Ground Floor
 3 BHK + 3 T
 Carpet Area : 1395.23 Sq. ft
 Balcony Area : 111.19 Sq. ft
 Garden Area : 205.02 Sq. ft
 Common Area : 320.90 Sq. ft



The information depicted herein viz., master plans, floor plans, furniture layout, fittings, illustrations, specifications, designs, dimensions, rendered views, colours, amenities and facilities etc., are subject to change without notifications as may be required by the relevant authorities or the developer's architect, and cannot form part of an offer or contract. Whilst every care is taken in providing this information, the Developer cannot be held liable for variations. All illustrations and pictures are artist's impression only. The information are subject to variations, additions, deletions, substitutions and modifications as may be recommended by the company's architect and/or the relevant approving authorities. The Developer is wholly exempt from any liability on account of any claim in this regard. (1 square metre = 10.764 square feet). E & OE

FLOOR PLAN

BLOCK B : 102 First Floor
 3 BHK + 3 T
 Carpet Area : 1395.23 Sq. ft
 Balcony Area : 111.19 Sq. ft
 Garden Area : -
 Common Area : 320.90 Sq. ft

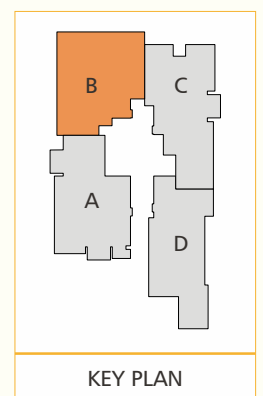
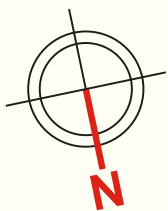
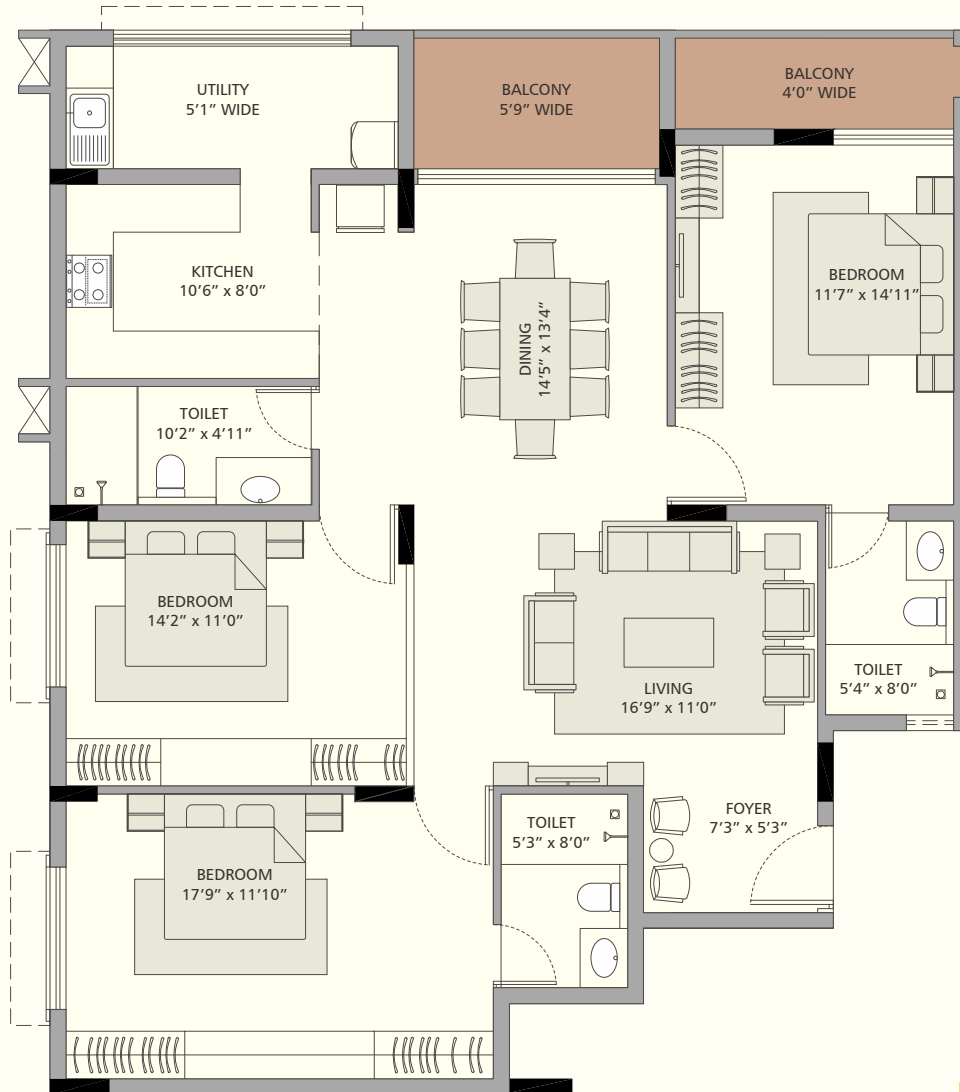


KEY PLAN

The information depicted herein viz., master plans, floor plans, furniture layout, fittings, illustrations, specifications, designs, dimensions, rendered views, colours, amenities and facilities etc., are subject to change without notifications as may be required by the relevant authorities or the developer's architect, and cannot form part of an offer or contract. Whilst every care is taken in providing this information, the Developer cannot be held liable for variations. All illustrations and pictures are artist's impression only. The information are subject to variations, additions, deletions, substitutions and modifications as may be recommended by the company's architect and/or the relevant approving authorities. The Developer is wholly exempt from any liability on account of any claim in this regard. (1 square metre = 10.764 square feet). E & OE

FLOOR PLAN

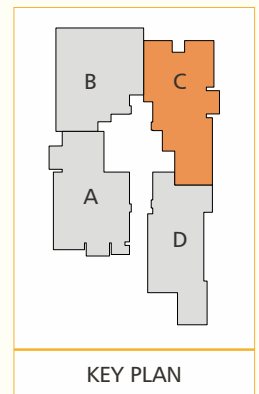
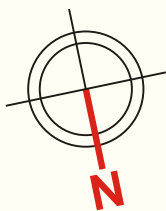
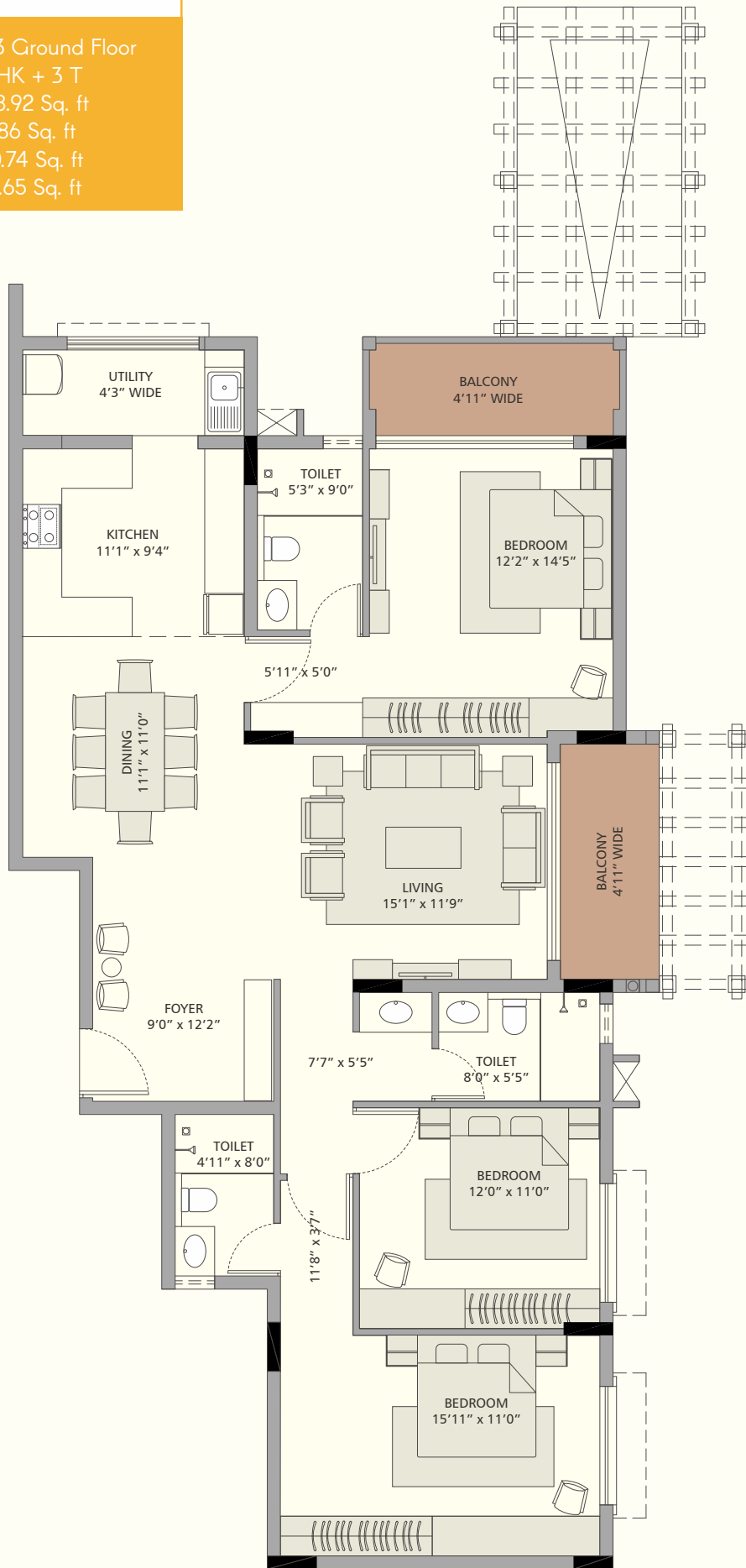
BLOCK B : 202 Second Floor
3 BHK + 3 T
Carpet Area : 1395.23 Sq. ft
Balcony Area : 111.19 Sq. ft
Garden Area : -
Common Area : 320.90 Sq. ft



The information depicted herein viz., master plans, floor plans, furniture layout, fittings, illustrations, specifications, designs, dimensions, rendered views, colours, amenities and facilities etc., are subject to change without notifications as may be required by the relevant authorities or the developer's architect, and cannot form part of an offer or contract. Whilst every care is taken in providing this information, the Developer cannot be held liable for variations. All illustrations and pictures are artist's impression only. The information are subject to variations, additions, deletions, substitutions and modifications as may be recommended by the company's architect and/or the relevant approving authorities. The Developer is wholly exempt from any liability on account of any claim in this regard. (1 square metre = 10.764 square feet). E & OE

FLOOR PLAN

BLOCK C : 003 Ground Floor
 3 BHK + 3 T
 Carpet Area : 1428.92 Sq. ft
 Balcony Area : 124.86 Sq. ft
 Garden Area : 290.74 Sq. ft
 Common Area : 328.65 Sq. ft

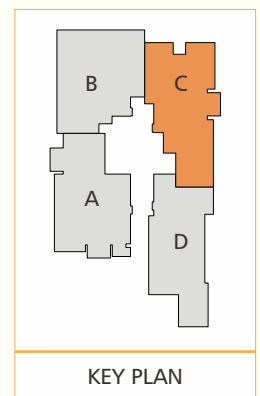
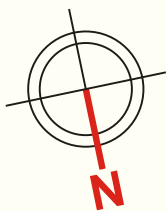
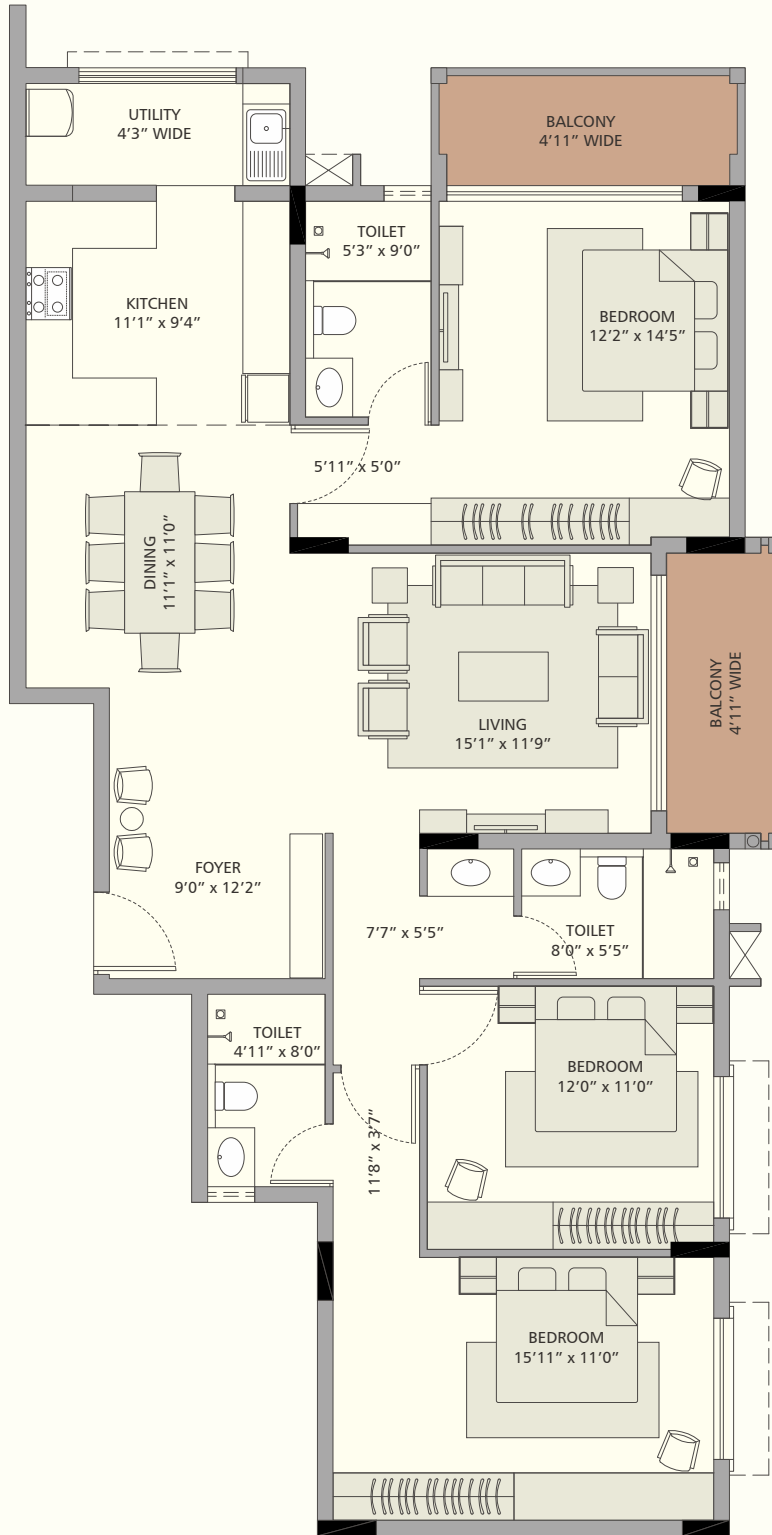


KEY PLAN

The information depicted herein viz., master plans, floor plans, furniture layout, fittings, illustrations, specifications, designs, dimensions, rendered views, colours, amenities and facilities etc., are subject to change without notifications as may be required by the relevant authorities or the developer's architect, and cannot form part of an offer or contract. Whilst every care is taken in providing this information, the Developer cannot be held liable for variations. All illustrations and pictures are artist's impression only. The information are subject to variations, additions, deletions, substitutions and modifications as may be recommended by the company's architect and/or the relevant approving authorities. The Developer is wholly exempt from any liability on account of any claim in this regard. (1 square metre = 10.764 square feet). E & OE

FLOOR PLAN

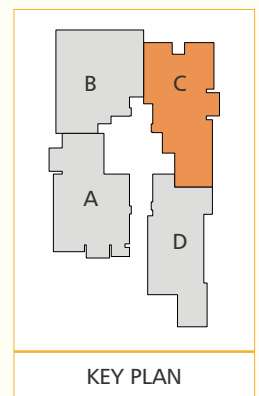
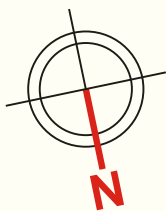
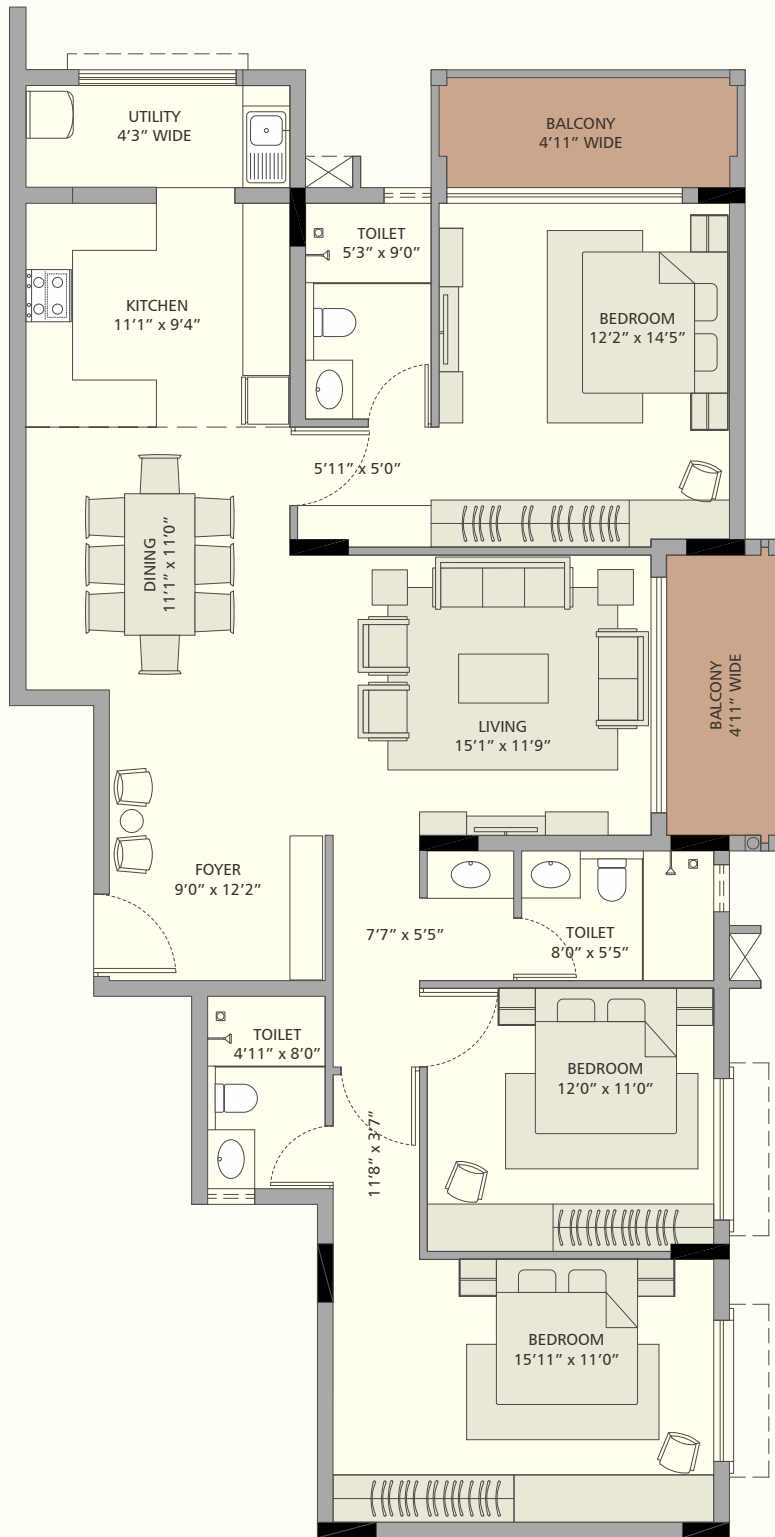
BLOCK C : 103 First Floor
 3 BHK + 3 T
 Carpet Area : 1428.92 Sq. ft
 Balcony Area : 124.86 Sq. ft
 Garden Area : -
 Common Area : 328.65 Sq. ft



The information depicted herein viz., master plans, floor plans, furniture layout, fittings, illustrations, specifications, designs, dimensions, rendered views, colours, amenities and facilities etc., are subject to change without notifications as may be required by the relevant authorities or the developer's architect, and cannot form part of an offer or contract. Whilst every care is taken in providing this information, the Developer cannot be held liable for variations. All illustrations and pictures are artist's impression only. The information are subject to variations, additions, deletions, substitutions and modifications as may be recommended by the company's architect and/or the relevant approving authorities. The Developer is wholly exempt from any liability on account of any claim in this regard. (1 square metre = 10.764 square feet). E & OE

FLOOR PLAN

BLOCK C : 203 Second Floor
 3 BHK + 3 T
 Carpet Area : 1428.92 Sq. ft
 Balcony Area : 124.86 Sq. ft
 Garden Area : -
 Common Area : 328.65 Sq. ft

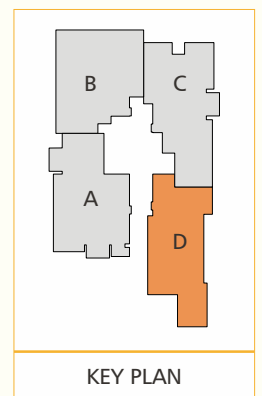
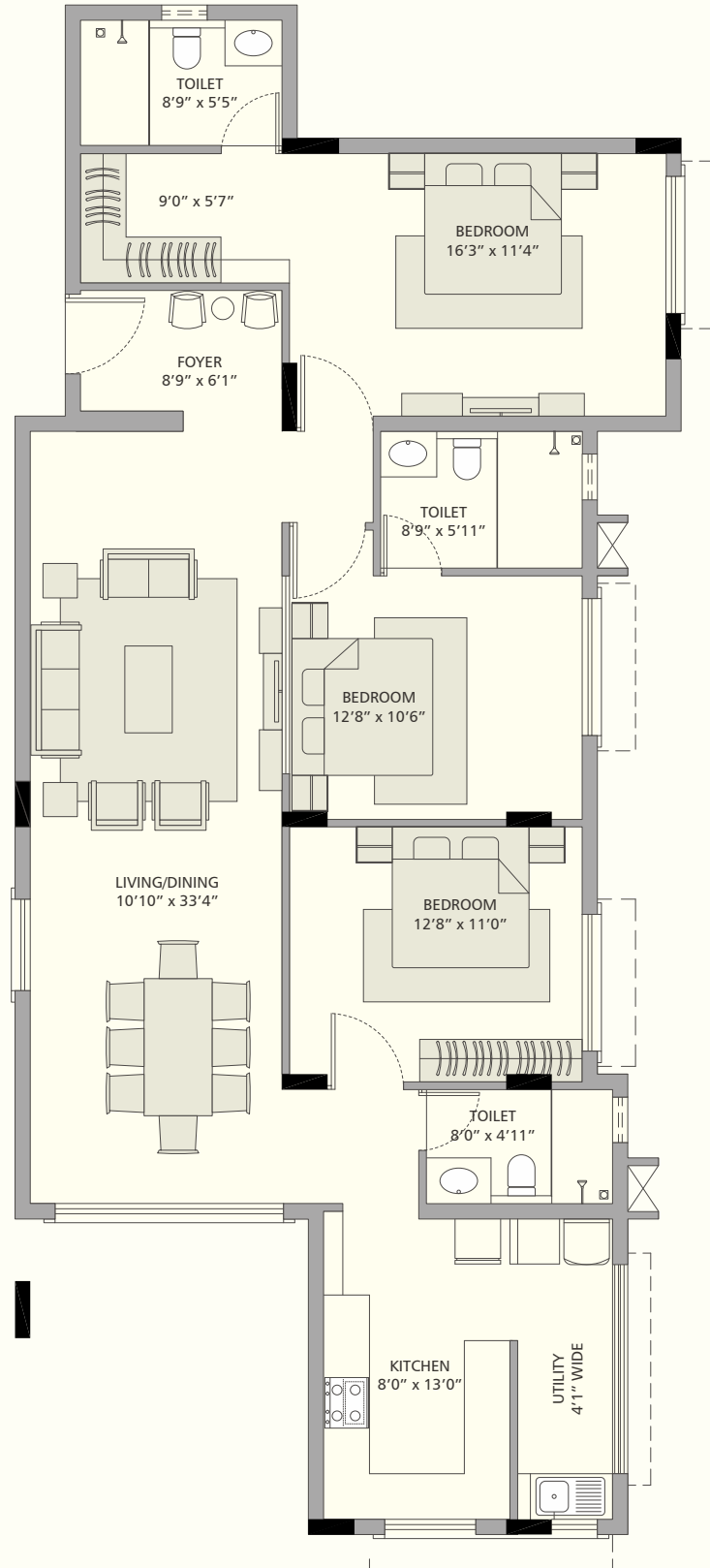


KEY PLAN

The information depicted herein viz., master plans, floor plans, furniture layout, fittings, illustrations, specifications, designs, dimensions, rendered views, colours, amenities and facilities etc., are subject to change without notifications as may be required by the relevant authorities or the developer's architect, and cannot form part of an offer or contract. Whilst every care is taken in providing this information, the Developer cannot be held liable for variations. All illustrations and pictures are artist's impression only. The information are subject to variations, additions, deletions, substitutions and modifications as may be recommended by the company's architect and/or the relevant approving authorities. The Developer is wholly exempt from any liability on account of any claim in this regard. (1 square metre = 10.764 square feet). E & OE

FLOOR PLAN

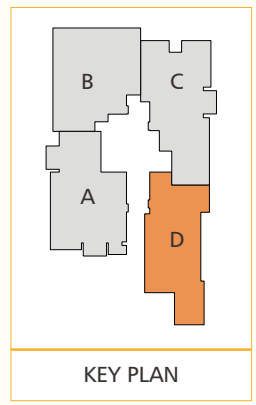
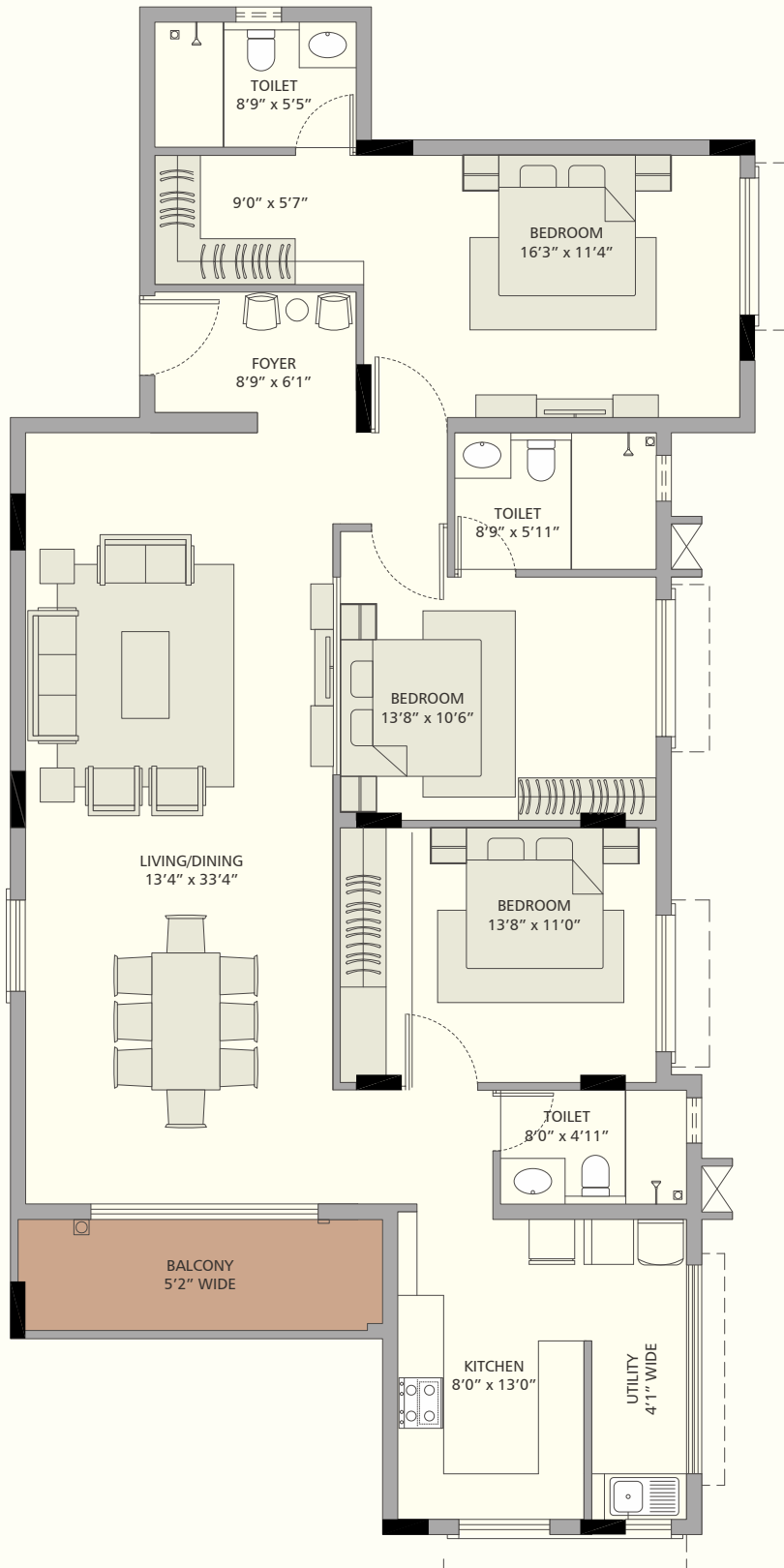
BLOCK D : 004 Ground Floor
 3 BHK + 3 T
 Carpet Area : 1423.43 Sq. ft
 Balcony Area : -
 Garden Area : -
 Common Area : 327.39 Sq. ft



The information depicted herein viz., master plans, floor plans, furniture layout, fittings, illustrations, specifications, designs, dimensions, rendered views, colours, amenities and facilities etc., are subject to change without notifications as may be required by the relevant authorities or the developer's architect, and cannot form part of an offer or contract. Whilst every care is taken in providing this information, the Developer cannot be held liable for variations. All illustrations and pictures are artist's impression only. The information are subject to variations, additions, deletions, substitutions and modifications as may be recommended by the company's architect and/or the relevant approving authorities. The Developer is wholly exempt from any liability on account of any claim in this regard. (1 square metre = 10.764 square feet). E & OE

FLOOR PLAN

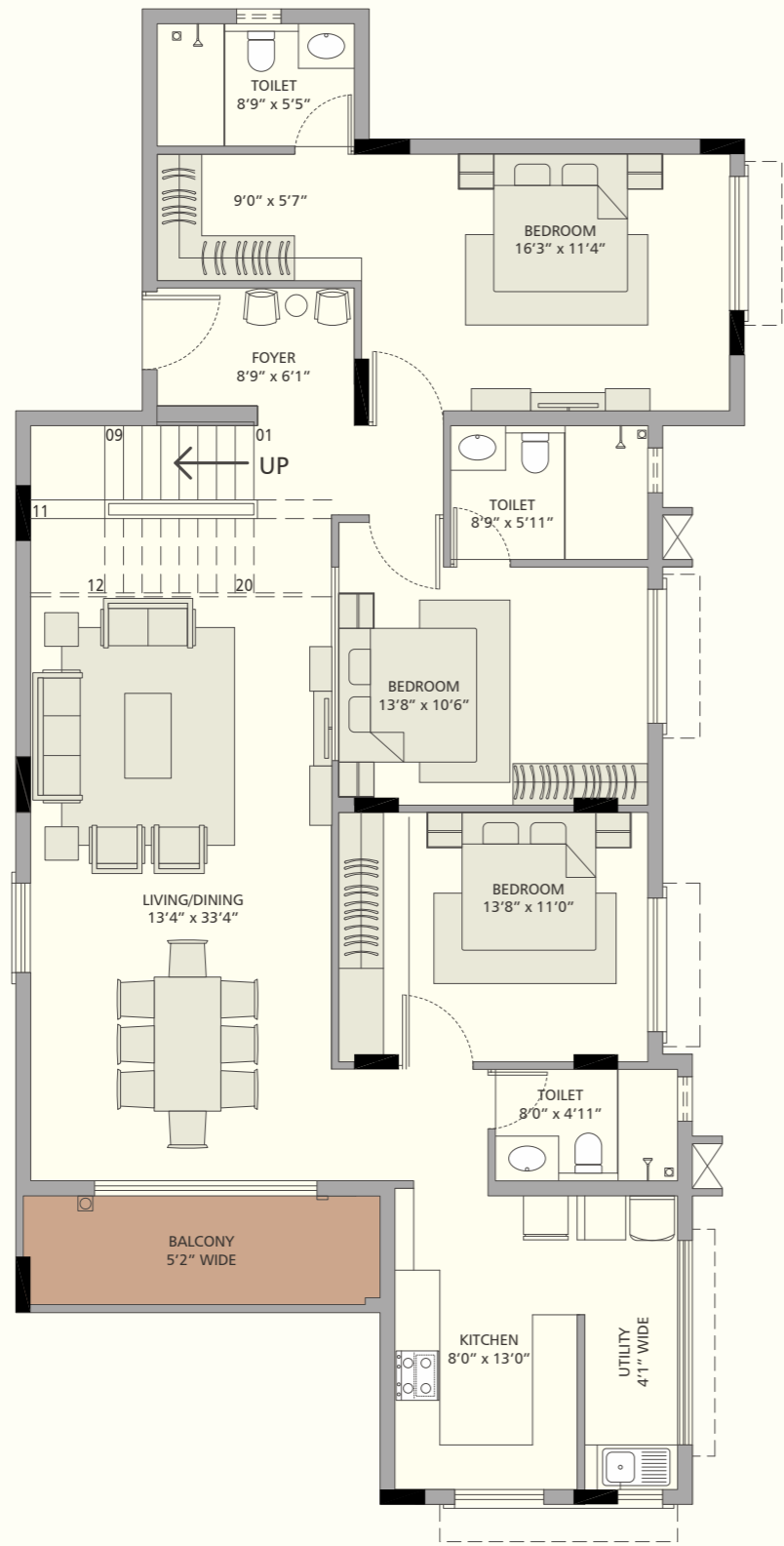
BLOCK D : 104 First Floor
 3 BHK + 3 T
 Carpet Area : 1540.54 Sq. ft
 Balcony Area : 82.67 Sq. ft
 Garden Area : -
 Common Area : 354.33 Sq. ft



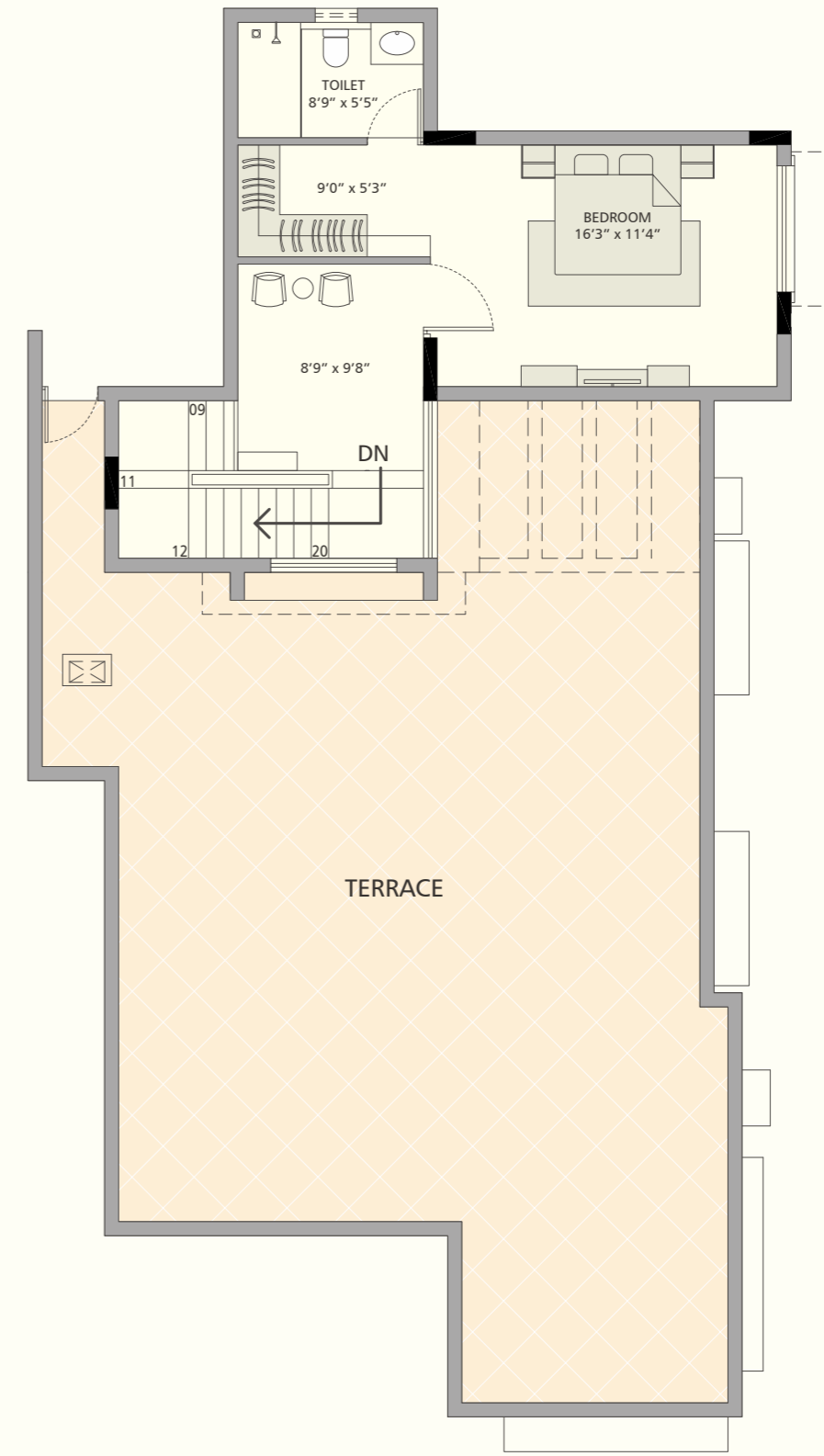
The information depicted herein viz., master plans, floor plans, furniture layout, fittings, illustrations, specifications, designs, dimensions, rendered views, colours, amenities and facilities etc., are subject to change without notifications as may be required by the relevant authorities or the developer's architect, and cannot form part of an offer or contract. Whilst every care is taken in providing this information, the Developer cannot be held liable for variations. All illustrations and pictures are artist's impression only. The information are subject to variations, additions, deletions, substitutions and modifications as may be recommended by the company's architect and/or the relevant approving authorities. The Developer is wholly exempt from any liability on account of any claim in this regard. (1 square metre = 10.764 square feet). E & OE

FLOOR PLAN

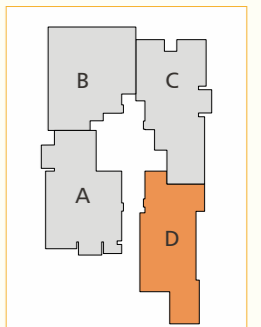
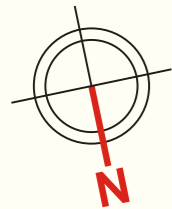
BLOCK D : 204 Second Floor (LL) & Third Floor (UL)
 4 BHK + 4 T
 Carpet Area : 2044.30 Sq. ft
 Balcony Area : 82.67 Sq. ft
 Garden Area : 392.99 Sq. ft
 Common Area : 470.19 Sq. ft



LOWER LEVEL



UPPER LEVEL



KEY PLAN